



CABIN SAFETY MANAGEMENT

Providing Good Safety Is Good Service

Singapore Aviation Safety Seminar (SASS)
6 March 2019, Singapore

CONTENT

1. SMS in a Nutshell
2. Balancing Safety & Services
 - ▶ Cabin Furnishing – Seat Products
 - ▶ Cabin Furnishing – Safety Equipment
 - ▶ Cabin Crew Role – the Past, the Present & the Survivors
3. The NEXT Step

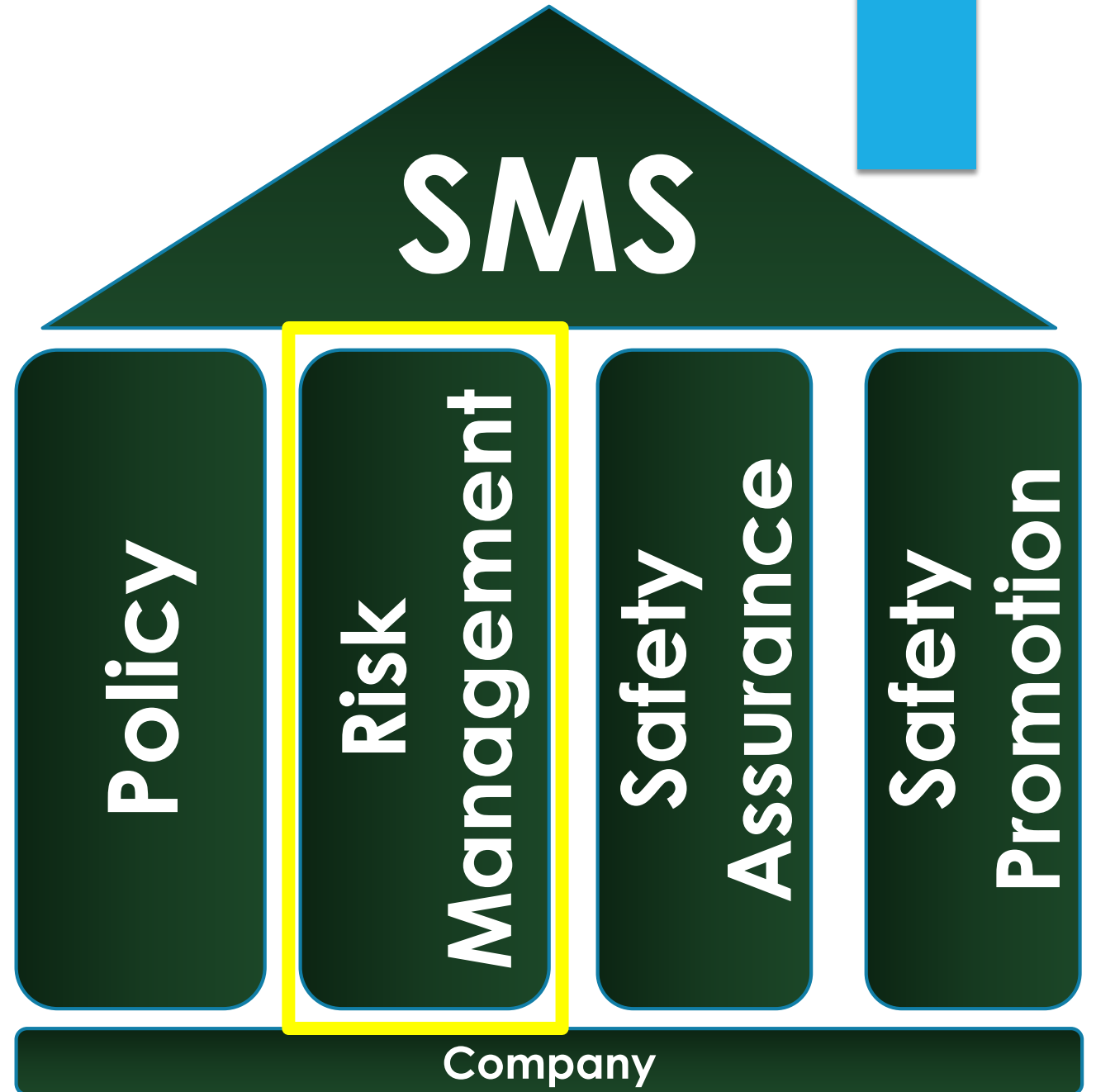


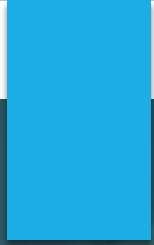
SAFETY MANAGEMENT SYSTEM (SMS) - *in a Nutshell*

Safety Management System (SMS) in a Nutshell



PresenterMedia





**BALANCING SAFETY &
SERVICE**

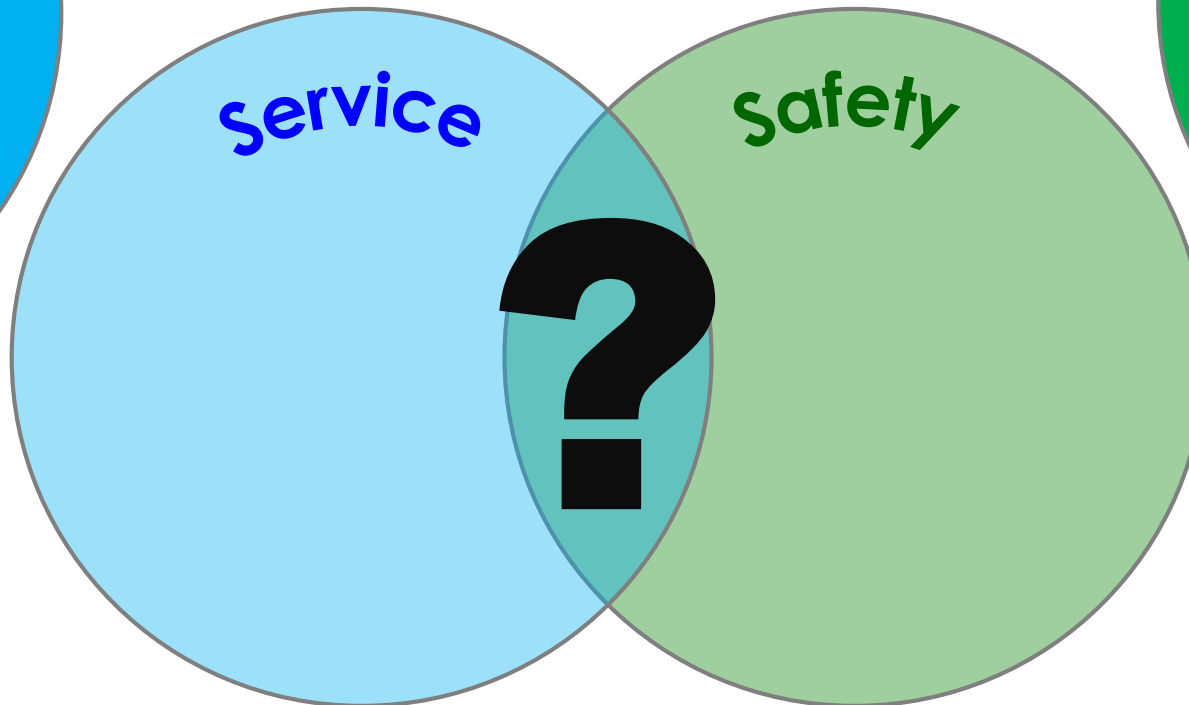
Balancing Safety & Service



Balancing Safety and Service



A



B



C

The background image shows the interior of an airplane cabin, split into two panels. The left panel shows rows of seats from a rear perspective, and the right panel shows a wider view of the cabin with seats and overhead storage bins. The entire image has a blue tint, and there is a solid blue rectangle in the top right corner.

Cabin Furnishing

– *Seat Products*





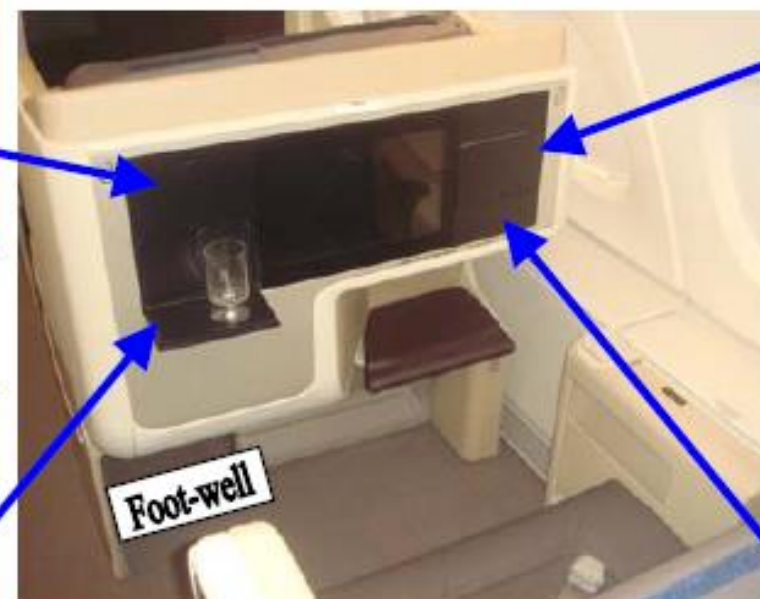
Side view of seat with cup holder deployed.



Mirror



Cup holder



Front view of A380 business class seat



Storage Compartment



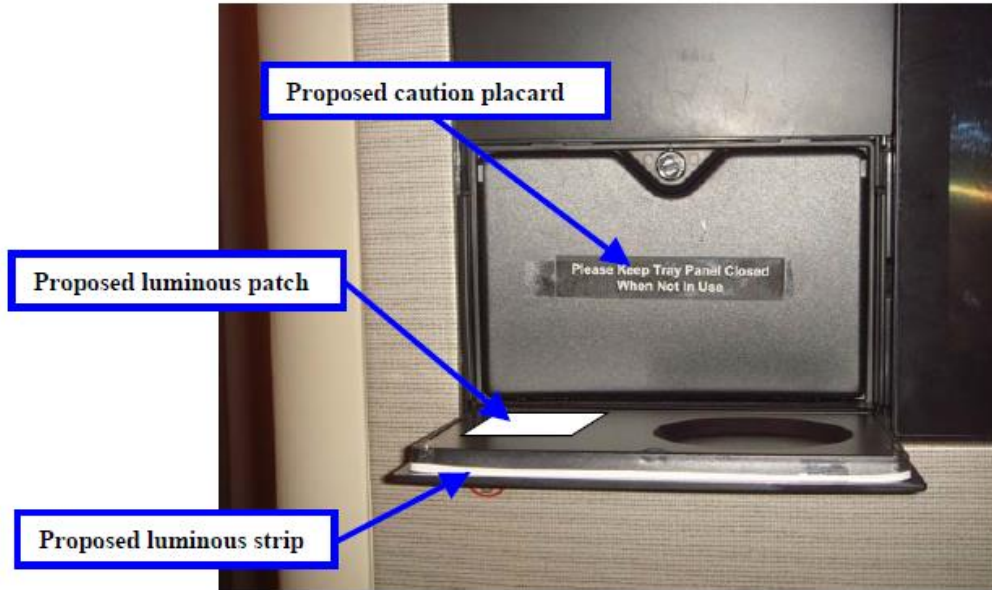
AV /power supply/USB port



Cup holder fold up when hit from bottom



Cup holder would unhinge when hit from top



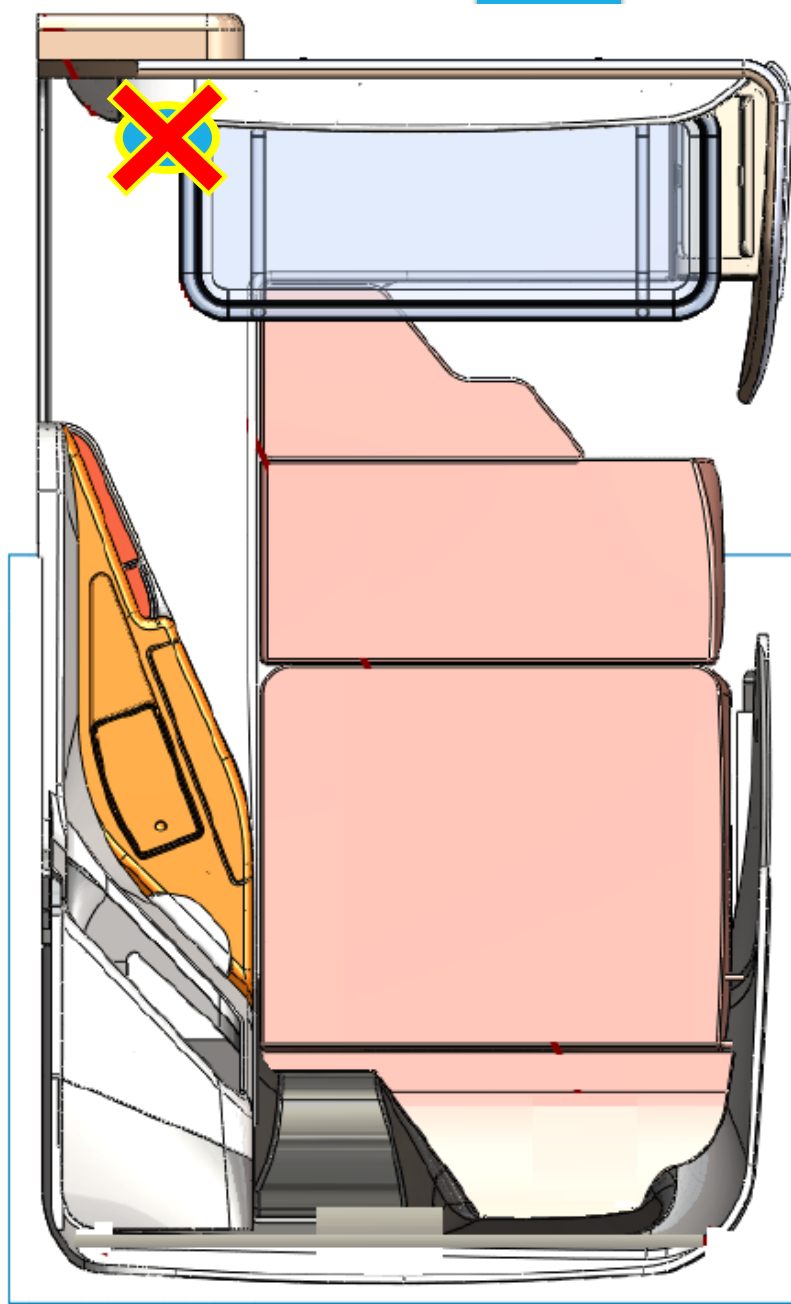
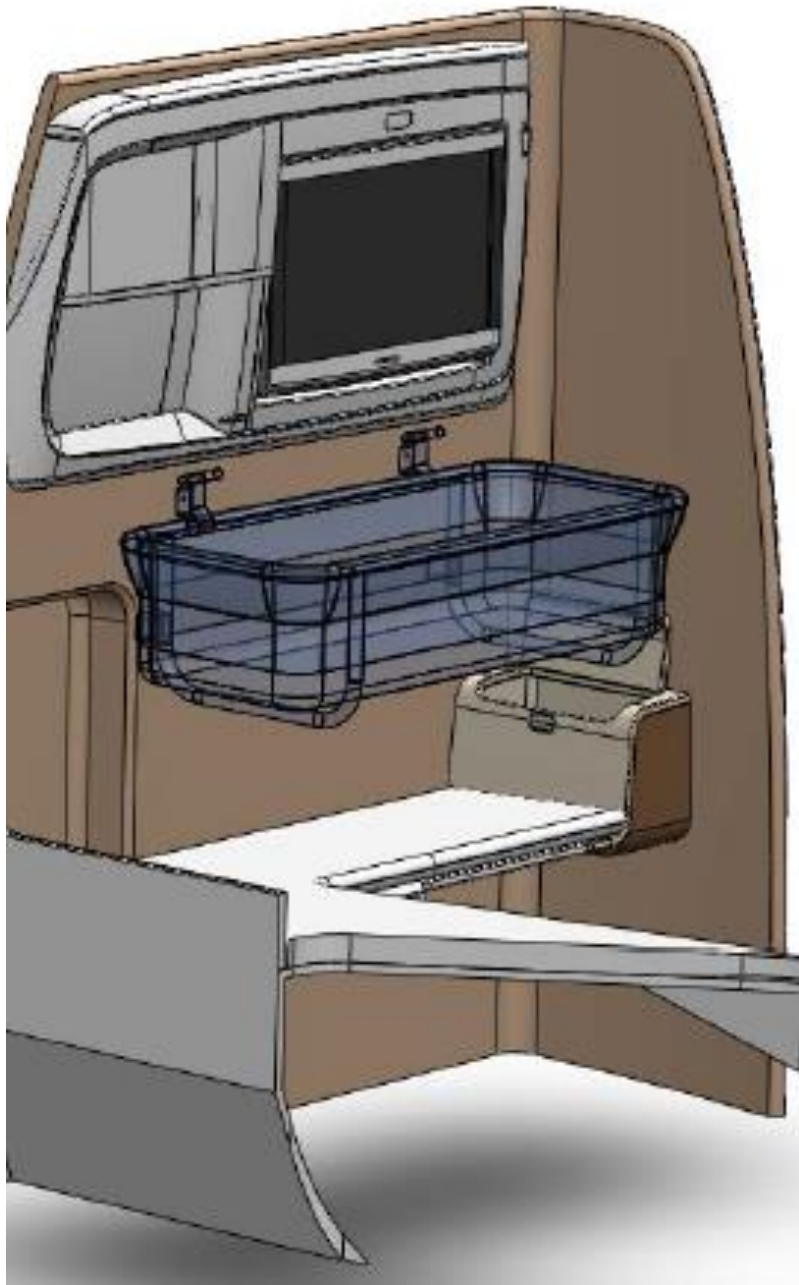
Sample of proposed caution placard and luminous strip/patch

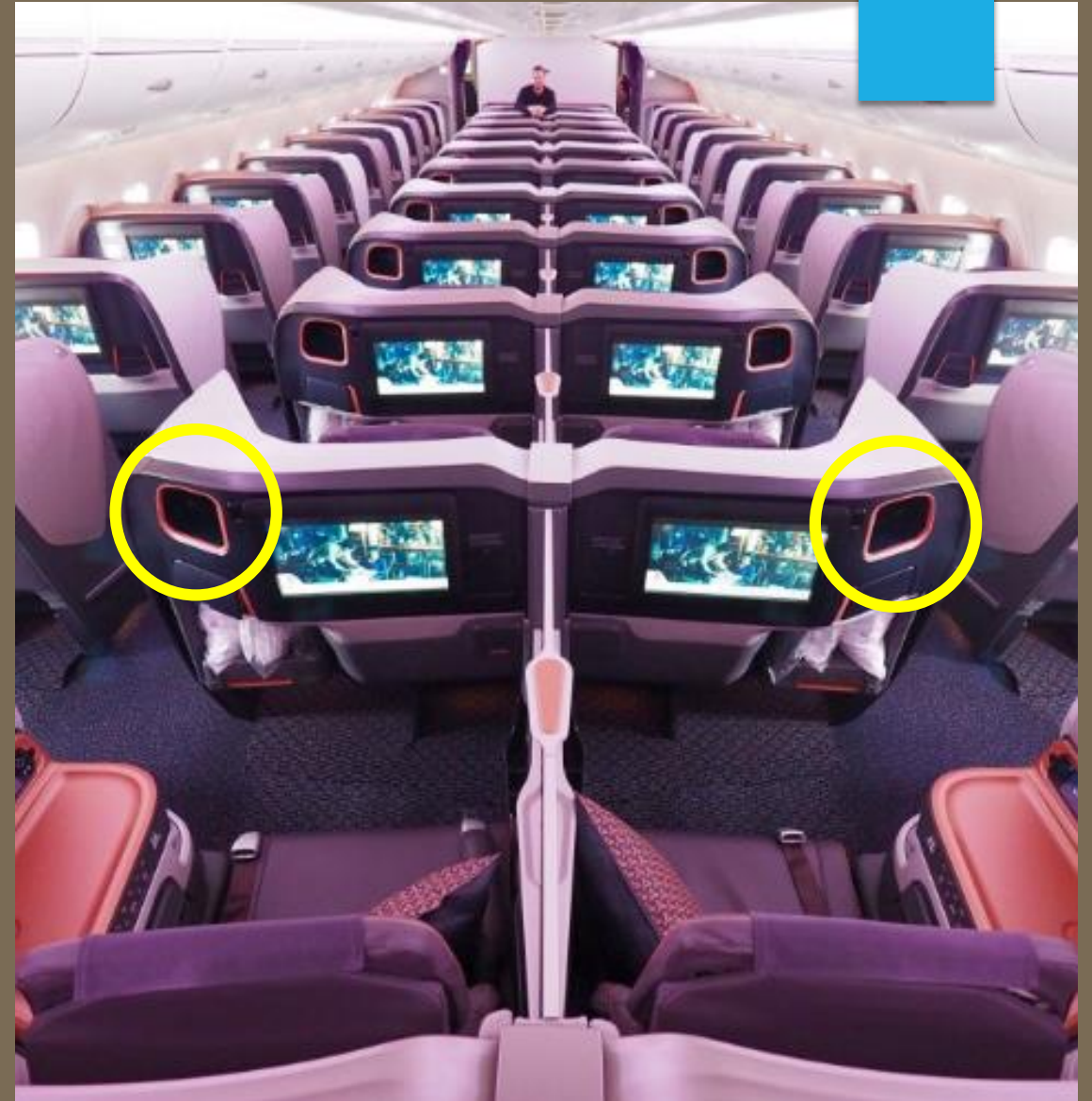


Cup holder after contour



Existing cup holder





The background image shows an open aircraft emergency equipment storage cabinet. Inside, various items are visible, including a first aid kit, a fire extinguisher, and a megaphone. The text "EMERGENCY EQUIPMENT" is printed on the inside of the cabinet door. A blue vertical bar is located in the top right corner of the image.

Cabin Furnishing

– *Safety Equipment*

Cabin crew operating limitations

140.—(1) An AOC holder may authorise a person to be assigned duty as a cabin crew member on up to 3 types of large aeroplanes if the safety equipment and emergency procedures are similar on these aeroplane types.

(2) No cabin crew member may be designated crew-in-charge on more than one type of large aeroplane unless otherwise approved by the Director-General of Civil Aviation.

(3) An AOC holder must specify in its Operations Manual any cabin crew operating limitations for a cabin crew member on a large aeroplane.

Regulations 140 of ANR Part 121

B777-200

B777-300

B787-10

B777/
B787

A350-900

A350/
A330

A330-300

A380-800

A380

Type 1

Type 2

Type 3

Regulations
140 of ANR
Part 121

Philosophy and Principle



standardization





INSTRUCTIONS

Prior to departure from all originating and transit stations with crew change, and/or after the aircraft has been left unattended by crew for any period of time, items listed below must be checked by the Primary Crew at their respective station for correct complement & location, stowage, quantity, gauge, security seals, serviceability indicator and any other sign of obvious unserviceability. Cabin Crew who are required to demonstrate live safety demo must also ensure that the demo kit is available. All Secondary Crew must check the equipment located at their respective crew seats [for e.g. emergency torch (if available), crew lifevest etc].

- * Please tick ☒ the operating aircraft type.
- Any discrepancies noted should be marked with a cross ✕
- * Qty as indicated in the Equipment Cluster.
- ** Please tick ☒ as required.
- CIC should only submit the completed checklist with discrepancies rectified (where applicable) to the Commander before departure.
- ** CIC To Check.

Equipment Cluster [Number in () Indicates Qty]:

Emergency Flashlight (1)	For B777 – check that the seal is intact and LED is flashing. For B787 – press for green LED.
Smokehood [PBE] (1)	Check that the seal and yellow serviceability indicator are intact.
Extinguisher [LHS-Halon/Halon-Free; RHS-Water] (1)	Check that the seal is intact and pressure sufficient (Halon/Halon-Free – locking pin is in-place and pressure gauge reads in the green band; Water – safety wire and seal installed).
Demo Kit (1)	Ensure each demonstration kit pouch contains: demo seat belt (1), demo lifevest (1) and demo oxygen mask (1).
Lifevest, Crew (1)	As per above “Instructions” (correct location and quantity).

Equipment That Requires Additional Inspection:

Mask & Oxygen Cylinder	Check that oxygen mask and cylinder are stowed together; and pressure gauge should read FULL at 1800 psi (for B777) / 1850 psi (for B787).
Power Megaphone	Ensure the megaphone is operative by pressing the trigger/handle located on the handheld. Listen for an audible “popping” sound.
Defibrillator (AED) - Heartstart FR2	Check for flashing hourglass status indicator on the storage box window. Flashing indicates serviceable.
Defibrillator (AED) - Zoll AED Pro (for B787 only, where installed)	Check for green tick status indicator on the storage box window. Green tick indicates serviceable.

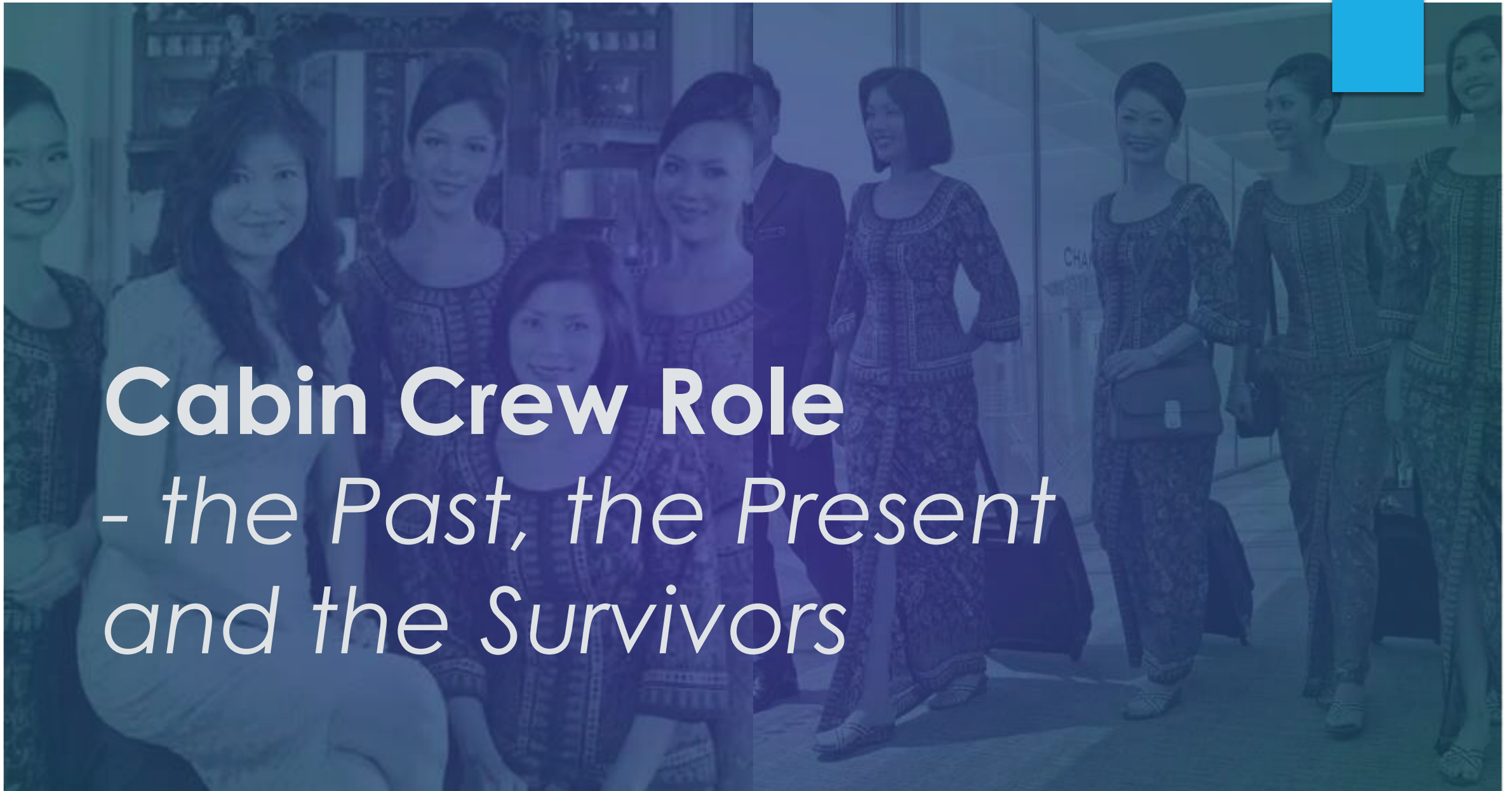
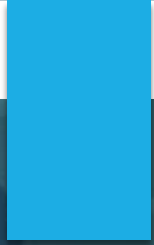
PRE-FLIGHT CABIN SAFETY CHECKLIST

+ ☒ B777-200 / ☒ ER / ☒ B787-10

STATION 1L	QTY	STATION 1R	QTY
<input type="checkbox"/> Equipment Cluster	*	<input type="checkbox"/> Equipment Cluster	*
<input type="checkbox"/> Mask & Oxygen Cylinder	2	<input type="checkbox"/> Mask & Oxygen Cylinder	2

RIGHT

LEFT



Cabin Crew Role

- *the Past, the Present
and the Survivors*



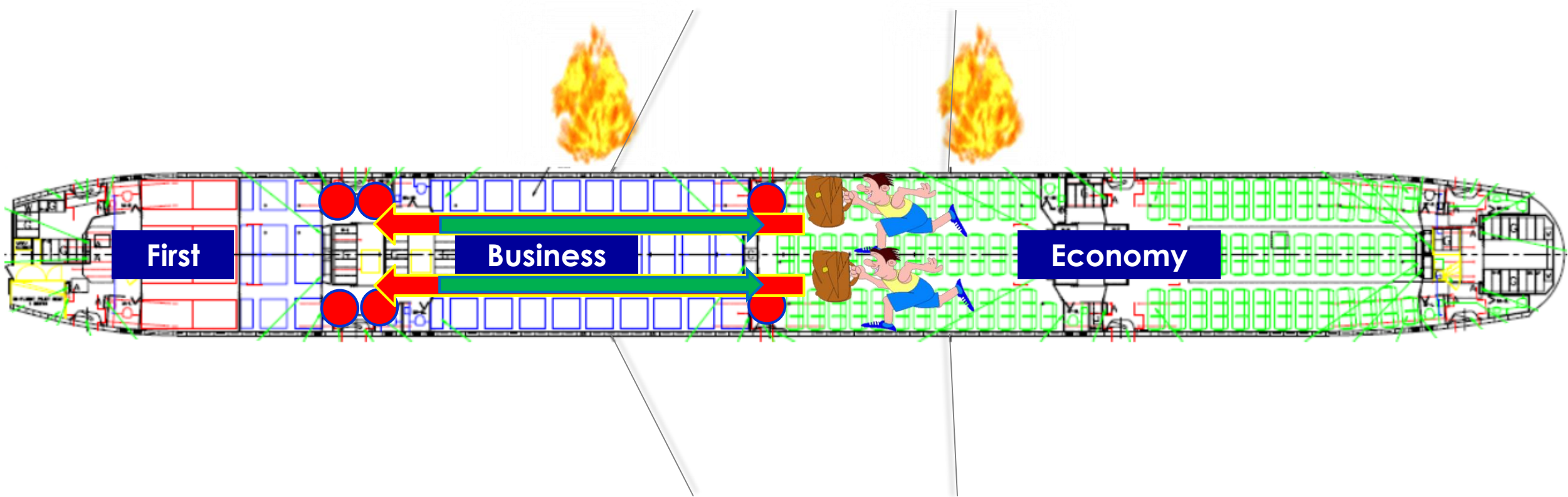


SQ368, 27Jun16
Singapore to Milan

mediacorp



After Landing







THE NEXT STEP



Safety Through Resilience

Do You Bend or Break?

SAFETY THROUGH RESILIENCE

*“...the ability to accommodate **change**, **conflict**, **disturbance**...
without breaking down, without catastrophic failure.”*

- Dr. Sidney Dekker





Aircraft Cabin Design & Certification

- *Airlines Perspective*

Cabin Operations Safety Technical Group



 AIR CANADA

BRITISH AIRWAYS

Austrian

virgin atlantic

Lufthansa

AIRFRANCE

SWISS

air astana

American Airlines

Alitalia

TAP AIR PORTUGAL

Emirates

QATAR

CATHAY PACIFIC

SINGAPORE AIRLINES

malaysia airlines

Kenya Airways
The Pride of Africa

australia

SOUTH AFRICAN AIRWAYS

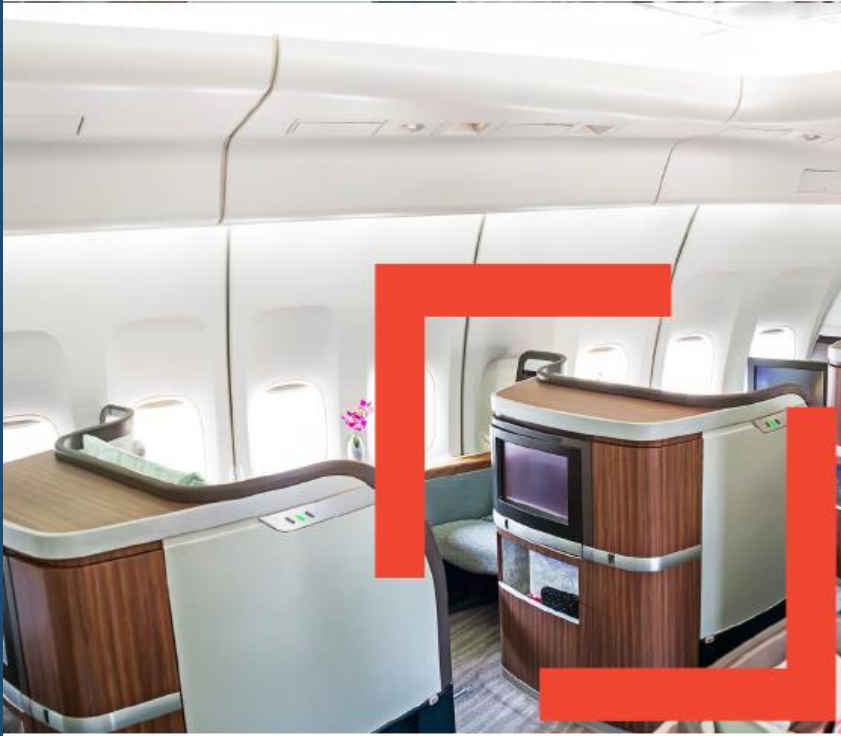
SAE
INTERNATIONAL®





Guidance material

Cabin interior retrofits and
entry into service program



Cabin Operations Safety

Best Practices Guide 4th Edition





Cabin Operations Safety Conference

11-13 JUNE, 2019, ISTANBUL TURKEY

See you
there...

Thank you